



Falcon

PROFESSIONAL
RANGE COOKERS

Made in
**GREAT
BRITAIN**





Relentlessly raising the bar, Falcon range's set out to inspire the passion and creativity of professional cooking in the domestic kitchen.

Stemming from a long standing heritage in professional catering equipment, the commercial pedigree of the Falcon brand is evident throughout every product; Precision engineering, outstanding build quality, design flair and high performance come as standard.

Falcon is the choice for those who share our passion for food, style and exceptional cooking.



COOKING POWER

Offering the choice of powerful gas hob, or sleek look induction top, the Falcon range provides you with ultimate control and superior performance.

Falcon cookers will let you indulge in your favourite culinary dishes with their two large high performance ovens*. Both the multifunction and fanned oven are complete with stay-clean removable liners. The robust dual circuit grill features a fully extending gliding tray.



Dual Fuel

Offers five professional standard burners, including a 5kW central burner, essential for the high temperatures needed to create wonderful stir fried dishes.



Falcon dual fuel hotplates feature a one piece burner head and individual pan supports for easy cleaning and reassembly.



All dual fuel models are manufactured with Flame Supervision Devices (FSD'S) as standard.

Available with a choice of gloss or matt pan supports.



Induction

Fast, responsive and incredibly controllable, induction cooking is becoming increasingly popular. Incorporating a wealth of safety features, our induction hobs offer by far the most efficient choice.



Falcon Cook Top

The cook top allows you to use several saucepans at the same time, making use of all the surface area of the plate, as the heat intensity decreases as you move outwards from the centre.

*900S is an exception with one large cavity



ITS ALL IN THE DETAIL

Falcon range cookers are at the pinnacle of engineering brilliance; ensuring the quality, durability and functionality you would expect from a cooker with its illustrious commercial heritage. Our cookers are made from a thick 1.2mm gauge stainless steel, our burners are solid brass and in one piece for ease of cleaning, and unlike most hob and cooker panels, our controls are ink moulded and injected onto a chrome plate for a dazzling professional finish made to last.

Falcon cookers have long set the professional standard both at home and in the commercial environment and is the fundamental ingredient in the serious cooks kitchen.

COLOUR INJECTION

We know you have a passion for cooking, so we also know how important it is for your kitchen kit to match your personal style, this is why we have introduced seven stunning colour variants to ensure your range cooker suits you. Go retro with ice white, or pay homage to Falcon's commercial roots with a stainless steel model, even create your dreamy kitchen scene with a soft china blue cooker, and because we care about the finer details, we have a range of coloured hoods to complement too.







THE FAMILY

As the star of your kitchen, a Falcon range cooker is not only built to perform, it's designed to look the part too. Our impressive range offers a stylish selection of colours, from vibrant Cherry Red to Classic Cream in a variety of widths and layouts to suit your cooking personality.

08 1092 DELUXE
10 1092 DELUXE CT
12 1092 CONTINENTAL
14 1092 CKR
16 1000 DELUXE

18 900 DELUXE
20 900 SINGLE CAVITY
22 HOODS
25 SPLASHBACKS

1092 DELUXE

The 1092 Deluxe has become a favourite in UK kitchens because of its stylish design, combined with professional build quality and durability. The sought after 1092 Deluxe features a superior, smooth operating Roll-out grill, which allows you to turn your food safely, whilst offering four variable height settings, heavy-duty control knobs, and an array of colour options.



Black
chrome or brass trim



Cream
chrome or brass trim



Ice White
brushed chrome trim



Stainless Steel
chrome trim



Cherry Red
brushed chrome trim



China Blue
brushed chrome trim



Slate
brushed chrome trim

- Dual fuel or induction
- 7 colours
- 1 x Multifunction oven
- 1 x Fan oven
- Heavy-duty oven shelves
- Catalytic oven liners
- Single handed ignition
- 5KW central burner (dual fuel)
- Stainless steel hotplate (dual fuel)
- Choice of matt or gloss pan supports (dual fuel)
- Dual circuit roll-out grill
- 3 year warranty



1092

DELUXE



Image courtesy of John Lewis of Hungerford

See page 26 for specifications. For more information visit www.falconappliances.co.uk

1092

DELUXE CT



1092 DELUXE CT

Falcon's professional performance has now been incorporated into the 1092 Deluxe CT, which is based on the 1092 Deluxe with a cooktop. The cooktop allows you to use several saucepans at the same time, making use of all the surface area of the plate, as the heat intensity decreases as you move outwards from the centre.



Black
chrome or brass trim



Cream
chrome or brass trim



Ice White
brushed chrome trim



Stainless Steel
chrome trim



Cherry Red
brushed chrome trim



China Blue
brushed chrome trim



Slate
brushed chrome trim

- Dual fuel or induction
- 7 colours
- 1 x Multifunction oven
- 1 x Fan oven
- Heavy-duty oven shelves
- Catalytic oven liners
- Single handed ignition
- 4kW central burner (dual fuel)
- Stainless steel hotplate (dual fuel)
- Dual circuit roll-out grill
- 3 year warranty

1092 CONTINENTAL

The Continental represents the new standard for the contemporary kitchen, by combining design-led aesthetics and a wider choice of colour options, with the professional build quality, features and performance that have become synonymous with the Falcon name.



Black
chrome trim



Cream
chrome trim



Ice White
brushed chrome trim



Stainless Steel
chrome trim



Cherry Red
brushed chrome trim



China Blue
brushed chrome trim



Slate
brushed chrome trim

- Dual fuel or induction
- 7 colours
- 1 x Multifunction oven
- 1 x Fan oven
- Heavy-duty oven shelves
- Catalytic oven liners
- Single handed ignition
- 5kW central burner (dual fuel)
- Stainless steel hotplate (dual fuel)
- Choice of matt or gloss pan supports (dual fuel)
- Full width storage drawer
- Closed door grilling
- 3 year warranty



1092

CONTINENTAL



Image courtesy of John Lewis of Hungerford

See page 26 for specifications. For more information visit www.falconappliances.co.uk

1092

CKR



Image courtesy of John Lewis of Hungerford

See page 26 for specifications. For more information visit www.falconappliances.co.uk

1092 CKR

It has often been said that a Falcon range cooker offers the nearest thing to a commercial cooking experience in the home. The 1092 CKR embodies Falcon's wider commercial heritage, delivering an appliance on which you can not only cook like a professional, but has all the looks of a true commercial range as well.



Stainless Steel
chrome trim

- Dual fuel
- 1 x Multifunction oven
- 1 x Fan oven
- Heavy-duty oven shelves
- Catalytic oven liners
- Single handed ignition
- 5kW central burner
- Stainless steel hotplate
- Choice of matt or gloss pan supports
- Dual circuit roll-out grill
- 3 year warranty

1000 DELUXE

The Falcon 1000 Deluxe combines the build quality and performance you would expect from any Falcon appliance, with the design flair that the modern home enthusiast desires. A capacious full-length fan oven offers extensive space within this one metre footprint.



Black
chrome trim



Cream
chrome trim



Ice White
brushed chrome trim



Stainless Steel
chrome trim



Cherry Red
brushed chrome trim



China Blue
brushed chrome trim



Slate
brushed chrome trim

- Dual fuel or induction
- 7 colours
- 1 x Multifunction oven
- 1 x Fan oven
- Heavy-duty oven shelves
- Catalytic oven liners
- Single handed ignition
- 5KW central burner (dual fuel)
- Stainless steel hotplate (dual fuel)
- Choice of matt or gloss pan supports (dual fuel)
- Dual circuit roll-out grill
- 3 year warranty



1000 DELUXE



9000 DELUXE



INDUCTION



DUAL FUEL





900 DELUXE

The 900 Deluxe may be small in size, but make no exception that this oven compromises on features. Boasting a powerful 5kW central burner, a multifunction oven twin with a tall fan oven and a separate roll-out grill, the 900 Deluxe can rival any wider counterpart.



Black
chrome or brass trim



Cream
chrome or brass trim



Ice White
brushed chrome trim



Stainless Steel
chrome trim



Cherry Red
brushed chrome trim



China Blue
brushed chrome trim



Slate
brushed chrome trim

- Dual fuel or induction
- 7 colours
- 1 x Multifunction oven
- 1 x Tall fan oven
- Heavy-duty oven shelves
- Catalytic oven liners
- Single handed ignition
- 5kW central burner (dual fuel)
- Stainless steel hotplate (dual fuel)
- Choice of matt or gloss pan supports (dual fuel)
- Dual circuit roll-out grill
- 3 year warranty



900 SINGLE CAVITY

Our revolutionary 900mm-wide range cooker features a unique energy saving panel (E.S.P) that allows you to split the oven in half - creating a truly flexible appliance, which offers the best of both worlds. Its 108 cubic litre (full capacity) oven is ideal for large family dinners, but it quickly transforms into a compact, economical single oven for smaller meals.



Black
chrome trim



Cream
chrome trim



Ice White
brushed chrome trim



Stainless Steel
chrome trim



Cherry Red
brushed chrome trim



China Blue
brushed chrome trim



Slate
brushed chrome trim

- Dual fuel or induction
- 7 colours
- 1 x Multifunction oven
- Energy saving panel
- Heavy-duty oven shelves
- Catalytic oven liners
- Single handed ignition
- 5kW central burner (dual fuel)
- Stainless steel hotplate (dual fuel)
- Choice of matt or gloss pan supports (dual fuel)
- Closed door grilling
- 3 year warranty



900

SINGLE CAVITY



With the E.S.P in place, the right hand oven can be used to cook in exactly the same manner as the full oven with identical functionality. Whether you are using the full size or divided oven, you have access to an impressive seven functions, including fan assisted and defrost settings. This fabulous range cooker is also A-rated for energy, which is especially impressive considering its 108 cubic litre capacity is one of the largest available in Europe.



SUPER EXTRACT HOOD



Black
chrome or brass* trim



Cream
chrome or brass* trim



Ice White
brushed chrome trim



Stainless Steel
chrome trim



Cherry Red
brushed chrome trim



China Blue
brushed chrome trim



Slate
brushed chrome trim

- Available in 900, 1000 & 1092mm widths
- Powerful extraction rate of 795.8m³/hr
- 10 minute delayed 'fan off' to clear residual fumes
- Three speed settings plus intensive (power boost) mode
- Effective light configuration providing optimum lighting on the hob
- Illuminated push button controls
- Two 2.6 watt integrated bright LED spotlights
- Dishwasher safe metal grease filters
- Grease filter timer warning after 30 hours of accumulated use

*1092mm only

CONTEMPORARY HOOD



Black
chrome trim



Cream
chrome trim



Ice White
brushed chrome trim



Stainless Steel
chrome trim



Cherry Red
brushed chrome trim



China Blue
brushed chrome trim



Slate
brushed chrome trim

SUPER FLAT HOOD



Stainless Steel
chrome trim



Black
chrome trim

- Available in 900 & 1090mm widths
- Powerful extraction rate of 804.2m³/hr
- Three speed settings plus intensive (power boost) mode
- Effective light configuration providing optimum lighting on the hob
- Illuminated push button controls

- Two 2.6 watt integrated bright LED spotlights
- Dishwasher safe metal grease filters
- Grease filter timer warning after 30 hours of accumulated use

- Available in 1098mm width
- Powerful extraction rate of 740m³/hr
- Push button controls
- Three speed settings plus intensive (boost) mode
- Dishwasher safe metal grease filters and charcoal filters for use in recirculation mode

- Three 20 watt integrated halogen spotlights
- Supplied for extraction or recirculation use

FEXT720/ BUILT-IN HOOD



FM900/ BUILT-IN HOOD



- Extraction rate of 785m³/hr
- Built-in hood with professional style stainless steel insert
- Three speed settings plus intensive (boost) mode
- Operated by remote control or integrated illuminated push button controls
- Two 35 watt integrated halogen spotlights
- Dishwasher safe metal grease filters and charcoal filters for use in recirculation mode
- Supplied for extraction or recirculation use

- Extraction rate of 787.4m³/hr
- Built-in hood with professional style stainless steel insert
- Three speed settings plus intensive (boost) mode
- 6 illuminated push button controls
- Two 2.6 watt integrated bright LED spotlights
- Dishwasher safe metal grease filters
- Grease filter timer warning after 30 hours of accumulated use

GLASS SPLASHBACKS

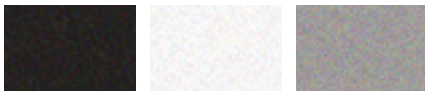


Black
900, 1000 or 1092

Purple
900 only

Cranberry
900 only

Grey
900, 1000 or 1092



Metallic Black
900, 1000 or 1092

Metallic White
900 only

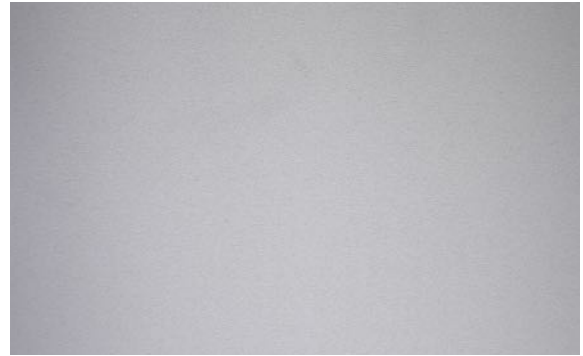
Metallic Silver
900, 1000 or 1092

Providing a splash of colour to your kitchen, the Falcon glass splashbacks are extremely durable, hygienic, easy to maintain and are available in 7 stunning colours to complement Falcon range cookers.

- Available in 900, 1000* & 1092* widths
- Easy to fit
- Simplifies cleaning due to their non-porous finish and lack of grout lines.

*Available on a select range of colours

STAINLESS STEEL SPLASHBACKS



Stylish yet practical, the Falcon stainless steel splashback completes the professional style of your kitchen.

- Attaches directly to the wall through the top and bottom flanges.
- Available in 900, 1000 & 1092 widths

SPECIFICATIONS

RANGE COOKING

	1092 Deluxe	1092 Deluxe	1092 Deluxe CT	1092 Continental	1092 Continental	1092 CKR
Fuel Type	Induction	Dual Fuel	Dual Fuel	Induction	Dual Fuel	Dual Fuel
Width (mm)	1092	1092	1092	1092	1092	1092
Depth (mm)	600	600	600	600	600	600
Height (mm)	912 - 937*	912 - 937*	912 - 937*	912 - 937*	912 - 937*	912 - 937*
Power ratings – hob (kW)	1 x 1.4 - 1.8**	1 x 1.7	1 x 1.7	1 x 1.4 - 1.8**	1 x 1.7	1 x 1.7
	3 x 1.85 - 2.5**	3 x 3.0	3 x 3.0	3 x 1.85 - 2.5**	3 x 3.0	3 x 3.0
	1 x 2.3 - 3.2**	1 x 5.0	1 x 4.0	1 x 2.3 - 3.2**	1 x 5.0	1 x 5.0
Total hob rating (kW)	9.25 - 10.6**	15.7	14.7	9.15 - 10.6**	15.7	15.7
Total oven rating (kW)	2.5 / 2.5	2.5 / 2.5	2.5 / 2.5	2.5 / 2.5	2.5 / 2.5	2.5 / 2.5
Total grill rating (kW)	2.3	2.3	2.3	-	-	2.3
Total rating (kW)	17.9**	15.7 (gas)	14.7 (gas)	15.6**	15.7 (gas)	15.7 (gas)
		7.4 (electric)	7.4 (electric)		5.0 (electric)	7.4 (electric)
Oven capacity (LH / RH)	68 / 79 L	68 / 79 L	68 / 79 L	73 / 73 L	73 / 73 L	68 / 79 L
Suggested power supply (50Hz) Single Phase	45.0A @ 230V	32.2A @ 230V	32.2A @ 230V	45.0A @ 230V	32.2A @ 230V	32.2A @ 230V
Gas connection	-	1/2" BSP	1/2" BSP	-	1/2" BSP	1/2" BSP
Energy ratings (LH / RH)	A / A	A / A	A / A	A / A	A / A	A / A

* Variable height adjustment
** with boost

	1000 Deluxe	1000 Deluxe	900 Deluxe	900 Deluxe	900 SC	900 SC
Fuel Type	Induction	Dual Fuel	Induction	Dual Fuel	Induction	Dual Fuel
Width (mm)	990	990	900	900	900	900
Depth (mm)	600	600	600	600	610	610
Height (mm)	912 - 937*	912 - 937*	912 - 937*	912 - 937*	912 - 937*	912 - 937*
Power ratings – hob (kW)	1 x 1.4 - 2.2**	1 x 1.7	1 x 1.4 - 1.8**	1 x 1.7	1 x 1.4 - 1.8**	1 x 1.7
	3 x 1.85 - 3.0**	3 x 3.0	3 x 1.85 - 2.5**	3 x 3.0	3 x 1.85 - 2.5**	3 x 3.0
	1 x 2.5 - 3.7**	1 x 5.0	1 x 2.3 - 3.2**	1 x 5.0	1 x 2.3 - 3.2**	1 x 5.0
Total hob rating (kW)	9.3 - 14.9**	15.7	9.25 - 12.5**	15.7	9.25 - 10.6**	14.7
Total oven rating (kW)	2.5 / 2.5	2.5 / 2.5	2.5 / 2.5	2.5 / 2.5	2 x 1.65 / 1.05	2 x 1.65 / 1.05
Total grill rating (kW)	2.3	2.3	2.3	2.3	2 x 1.75	2 x 1.75
Total rating (kW)	18.4**	15.7 (gas)	17.9**	15.7 (gas)	14.3**	15.7 (gas)
		7.4 (electric)		7.4 (electric)		3.6 (electric)
Oven capacity (LH / RH)	78 / 81 L	68 / 79 L	68 / 66 L	68 / 66 L	108 / 49 L	108 / 49 L
Suggested power supply (50Hz) Single Phase	45.0A @ 230V	32.2A @ 230V	45.0A @ 230V	32.2A @ 230V	45.0A @ 230V	32.2A @ 230V
Gas connection	-	1/2" BSP	-	1/2" BSP	-	1/2" BSP
Energy ratings (LH / RH)	A / A	A / A	A / A	A / A	C / A	C / A

* Variable height adjustment
** with boost



Falcon range cooker and hoods have a 3 year warranty. The 3 year warranty covers any mechanical breakdown and cosmetic deterioration associated with a manufacturing defect. Terms & conditions apply.

For further information visit www.falconappliances.co.uk

HOODS

	Super Extract	Super Flat
Width (mm)	900 / 1000 / 1092	1098
Depth (mm)	550	490
Height (mm)	680 - 970	670 - 1000
Net weight (kg)	23.2 / 25.2 / 26.2	23.47
Light type	2 x 2.6W LED	3 x 20W Halogen
SS Baffles	2 / 3 / 3	4
Sound Power		
Minimum normal speed	45dB(A)	55dB(A)
Maximum normal speed	62dB(A)	68dB(A)
Intensive Mode	70dB(A)	72dB(A)
Maximum output	795.8m3/hr	740m3/hr
Motor	275W	275W
Total Power	280.2W	335W
Duct Size*	Ø150mm	Ø150mm or 125mm
Energy Rating	A	A

	Contemporary	FEXT720/
Width (mm)	900 / 1090	720
Depth (mm)	550	400
Height (mm)	680 - 970	275.6
Net weight (kg)	25.6 / 28.6	14.8
Light type	2 x 2.6W LED	2 x 35W
SS Baffles	2	2
Sound Power		
Minimum normal speed	46dB(A)	53dB(A)
Maximum normal speed	62dB(A)	67dB(A)
Intensive Mode	69dB(A)	70dB(A)
Maximum output	804.2m3/hr	785m3/hr
Motor	275W	275W
Total Power	280.2W	345W
Duct Size*	Ø150mm	Ø150mm or 125mm
Energy Rating	A	A

	FM900/
Width (mm)	900
Depth (mm)	280
Height (mm)	292
Net weight (kg)	10.4
Light type	2 x 2.6W LED
SS Baffles	2
Sound Power	
Minimum normal speed	44dB(A)
Maximum normal speed	62dB(A)
Intensive Mode	71dB(A)
Maximum output	787.4m3/hr
Motor	275W
Total Power	280.2W
Duct Size*	Ø150mm
Energy Rating	A

* Ducting kit is an optional extra

MERCURY

DESIGNED FOR PERFECTION

QUALITY
STYLE
INSPIRATION
DESIGN
POWER
INNOVATION

www.mercuryappliances.co.uk



PROFESSIONAL
RANGE COOKERS

Falcon Appliances
Clarence Street, Royal Leamington Spa,
Warwickshire, CV31 2AD

Tel 0800 8046261 or 0370 789 5107 from a mobile
Fax 01926 311032

Email consumers@falconappliances.co.uk

www.falconappliances.co.uk

Trade Enquiries 0115 946 4000

Email sales@falconappliances.co.uk



Part of the
AGA RANGEmaster
Group

D007935/12/15

Registered in England and Wales. Registration No. 354715
Registered Office: Juno Drive, Leamington Spa, Warwickshire, CV31 3RG

Falcon continuously seeks improvements in specification, design and production of products and thus, alterations take place periodically. Whilst every effort is made to produce up-to-date literature, this brochure should not be regarded as an infallible guide to current specification or as an installation guide, nor does it constitute an offer for the sale of any particular appliance. Before fitting any appliance please refer to the installation guide, available to download at www.falconappliances.co.uk